



## Season 2013-14 Opening Round Ylläs – Kolari

### Bulletin 3 Update November 1<sup>st</sup>

#### The IOF World Cup in Ski Orienteering in Ylläs, Kolari December 2<sup>nd</sup> to 8<sup>th</sup> 2013

Traditional Finnish Ski Orienteering Season Opening the Ensilumen Rastit with classes H/D 10-80 will be arranged together with World Cup Opening as scheduled in program. See more [www.ensilumenrastit.fi](http://www.ensilumenrastit.fi)

Bulletin 3 contains all information included in the Bulletin 1 and the Bulletin 2. There is some updated information – read carefully the Bulletin 3.

#### Organizers

The organiser is Lapin Suunnistus ry (the Orienteering Association of Lapland) together with local orienteering clubs.

Event Director	Veli-Markku Korteniemi
Contact person	Tero Taulavuori
Email	<a href="mailto:info(at)ensilumenrastit.fi">info(at)ensilumenrastit.fi</a>
Homepage	<a href="http://ensilumenrastit.fi/en">http://ensilumenrastit.fi/en</a>

#### Controllers

IOF Senior Event Adviser	Tommy Jauhojärvi (NOR)
National Controller	Ossi Lakkala
Course Controller	Unto Kanerva

#### Competition office

Address (from 2 <sup>nd</sup> to 8 <sup>th</sup> December)	Tunturintie 54, 95970 Äkäslompolo, Finland
Email	<a href="mailto:info(at)ensilumenrastit.fi">info(at)ensilumenrastit.fi</a>
Phone	+358 40 778 1122



## Venue

World Cup opening in Ski Orienteering will be organized in the Ski Resort Ylläs, Kolari, Finland.

The Event Centre is situated in Äkäslompola village at Kellokas Visitor Centre. The address is Tunturintie 54, 95970 Äkäslompola, Finland. See more

<http://www.outdoors.fi/customerservicepoints/visitorcentres/kellokas/Pages/Default.aspx>

The nearest international airport is Kittilä Airport. See more information: [www.finavia.fi](http://www.finavia.fi). There is bus connection from each flight to Ylläs Ski Resort (60 min).

The nearest railway station is in Kolari. See more information: [www.vr.fi](http://www.vr.fi). There is bus connection to the Ylläs Ski Resort (30 min).



## Program

### Monday, December 2<sup>nd</sup>

Competition Office is opened  
Ski training option

### Tuesday, December 3<sup>rd</sup>

Model event  
Opening Ceremony  
Team Officials' Meeting for Middle Distance

### Wednesday, December 4<sup>th</sup>

World Cup Middle Distance, Mass start  
Team Officials' Meeting for Mixed Sprint Relay

### Thursday, December 5<sup>th</sup>

World Cup Sprint Relay  
Ensilumen Sprint Relay  
Team Officials' Meeting for Long Distance

### Friday December 6<sup>th</sup>

World Cup Long Distance, Mass start

### Saturday, December 7<sup>th</sup>

World Cup Rest day  
Ensilumen Long Distance  
Team Officials' Meeting for Sprint

### Sunday, December 8<sup>th</sup>

World Cup Sprint Distance  
Ensilumen Sprint Distance  
Prizegiving ceremony

## **Entries and entry fees** (*Updated new information here*)

There entries of 100 competitors from 13 federations.

See the summary of entries <http://ensilumenrastit.fi/en>

The IOF Ski Orienteering Commission has asked the organizer to find solutions that the total entry fee for competitors could be less than 180 €. Because nearly all teams – according to the information from the Commission – are using their own cars or rental cars, the organizer has decided to make following two main changes in services during the World Cup Opening Round in Ylläs compared with information in Bulletin 2 and Bulletin 3.

- there are no organizer's local transports from accommodation villages to competition centre
- there is no banquet on Friday 6<sup>th</sup> December

New Entry fee for competitors is € 105 and accreditation fee for team officials € 40. Entry fee for competitors includes model event, participation in individual races, competition maps, start and result lists. Accreditation fee includes model event, team officials' meetings (two participants by each nation), competition maps, start and result lists. If a competitor will take part in less than all three individual races, entry fee is € 35 less/race – information has to be given in the final entry (November 22<sup>nd</sup>)

Entry fee for mixed sprint relay team is € 60 per team.

Preliminary Entries will be done by using official Entry Form A which can be copied from the organizer's official website.

Each competitor's name and gender and the names of the team officials shall reach the organizer **at the latest November 22<sup>nd</sup>, 2013**. Entries will be done by using official Entry Form B which can be copied from the organizer's official website.

## **Payments** (*Updated deadline here*)

Payments of World Cup entry fees and accreditation fees shall be paid **at the latest November 8<sup>th</sup>, 2013**. Fees should be paid to:

Ensilumen Rastit/Lapin Suunnistus ry  
IBAN: FI48 5533 0020 0580 66  
BIC: OKOYFIHH  
Bank: Ylitornion Osuuspankki

## **Accommodation**

There are available hotel, hotel apartments, apartments and cottage accommodation in different price categories. See detailed information in Bulletin 2.

Teams have to book and pay their accommodations by contacting local hotels and booking offices.

[www.laplandhotels.com](http://www.laplandhotels.com) Email [sales@laplandhotels.com](mailto:sales@laplandhotels.com) and tel. + 358 (0)16 3232

[www.destinationlapland.com](http://www.destinationlapland.com) Email [info@destinationlapland.com](mailto:info@destinationlapland.com) / tel. +358 (0)16 510 3300

You can find more options for accommodation via: <http://www.yllas.fi/en>

## **Food**

There are many restaurants for meals with different price categories and supermarkets for shopping of food in the Ylläs Resort area.

## Transports (*Updated new information here*)

The teams have to arrange their travels to the Ylläs Resort. See above information how to reach Ylläs from Kolari railway station and from Kittilä Airport.

There are no local transports arranged by the organizer. Teams without own car or rental car can get local transports from the accommodation villages. The Event Office will offer help in arrangements but teams has to pay the cost of transport.

## Visa requirements

According to the current regulations, citizens of some countries must obtain a visa in order to enter Finland. Please check the following website for more information.

<http://www.formin.fi/>

Visas should be applied at your nearest Finnish Embassy. Please note that conditions of entry to Finland can change and all participants are advised to keep up to date with the current situation by consulting their local Finnish Embassy.

## Rules, Classes and Entry Regulation

There is one class for men and women in individual distances. Sprint Relay is for mixed teams with one man and one woman. For further details on classes and regulations please refer to the Competition Rules on the IOF Web: [www.orienteering.org](http://www.orienteering.org)

Each Federation may enter up to 6 women and 6 men in each individual competition. Finland as organizing federation may enter two additional competitors in each individual competition.

Each Federation may enter **up to 6 teams in mixed sprint relay**. This is updated information according to the special rules for season 2013-2014.

## Terrain, climate and daylight

The terrain is situated on slope areas of Ylläs fell and consists of pine and spruce forest and partly open areas. Altitude is 200-450 m.

The climate is normal winter weather. Temperature is normally between -5 to -20°C. Daylight at Ylläs region is between 9 AM to 2 PM.

Local weather <http://en.ilmatieteenlaitos.fi/weather/kolari>

## Maps

Maps are drawn according to the International Specifications for Orienteering Maps.

Competition	Scale	Contour interval
Long distance	1:15 000	5 m
Middle distance	1:10 000	5 m
Sprint	1:5 000	5 m
Mixed Sprint relay	1:5 000	5 m

## Punching system

Emit Touch-Free punching system will be used. All World Cup runners will be equipped with emiTags from the organizer. Private emiTags will not be allowed.

## Courses

Competition	Winning time men	Length of the course men	Winning time women	Length of the course women
Long distance	90 min	27 km	70 min	18 km
Middle distance	40 min	13 km	40 min	11 km
Sprint	13 min	4 km	12 min	3 km
Mixed Sprint relay/leg	8 min	3,0 km	7 min	2,5 km

Length of course is according to the shortest skiable route.

## Terrains

### Middle distance (Kellokas competition centre)

The terrain is gentle fell terrain partly with detailed one curve contours and the tree stand is sparse pine forest. There are permanent skiing tracks in the competition area. The biggest height difference between the lowest and the highest track in terrain is 90 meters. The area is 280-380 meters above the sea level.

### Mixed Sprint relay (Kellokas competition centre)

The terrain is gentle fell terrain. Area consists of forest and marsh areas. The tree stand is sparse pine forest. Marsh areas are open or covered by sparse forest. There are permanent skiing tracks in the competition area. The biggest height difference between the lowest and the highest track in terrain is 80 meters. The area is 280-380 meters above the sea level.

### Long distance (Iso-Ylläs competition centre)

The terrain is mainly lower hillside of the fell and marsh areas. Terrain at the foot of the fell is flat or moderately hilly. The forest in upper parts of the fell is sparse. The lower part of the terrain is covered by sparse pine and dense spruce forests. Marsh areas are generally open or covered by sparse forest. The ground on marsh areas is flat. There are permanent skiing tracks in the competition area. The biggest height difference between the lowest and the highest track in terrain is 200 m. The area is 200-420 meters above the sea level.

### Sprint distance (Iso-Ylläs competition centre)

The terrain is mainly lower hillside of the fell. The forest on the hillside is sparse. Terrain at the foot of the hillside is covered by sparse pine forest. There are permanent skiing tracks in the competition area. The biggest height difference between the lowest and the highest track in terrain is 100 m. The area is 240-360 meters above the sea level.

## Competition program, competition areas and finish arenas

Competition	Date	Area	Finish arena
Model event	Tuesday, December 3 <sup>rd</sup>	Kellokas	
Middle distance	Wednesday, December 4 <sup>th</sup>	Kellokas	Kellokas
Mixed Sprint relay	Thursday, December 5 <sup>th</sup>	Kellokas	Kellokas
Long distance	Friday December 6 <sup>th</sup>	Iso-Ylläs	Iso-Ylläs Arena
Sprint	Sunday, December 8 <sup>th</sup>	Iso-Ylläs	Iso-Ylläs Arena

The Kellokas area is the North-West area and the Iso-Ylläs area is the South-East area on the map of embargoed areas.

## **Detailed programme** (*Updated new information here*)

### **Monday 2 December:**

15.00-19.00 Competition office open in Kellokas

### **Tuesday 3 December:**

08.00-20.00 Competition office open in Kellokas

10.00-13.00 Model Event

15.00 Deadline for entry for Middle distance.

17.00 Opening ceremony

18.00 Team officials' meeting for middle distance.

### **Wednesday 4 December:**

08.00-20.00 Competition office open in Kellokas

10.30 Middle distance men, mass start

11.45 Middle distance women, mass start

13.00 Flower ceremony

15.00 Deadline for entry for Mixed sprint relay

18.00 Team officials' meeting for Mixed sprint relay

### **Thursday 5 December:**

08.00-20.00 Competition office open in Kellokas

10.00 Mixed sprint relay

11.30 Ensilumenrastit sprint relay

12.00 Flower ceremony

15.00 Deadline for entry for the long distance.

18.00 Team officials' meeting for the long distance.

### **Friday 6 December**

08.00-16.00 Competition office open in Iso-Ylläs competition centre

10.00 Long distance men, mass start

10.10 Long distance women, mass start

12.30 Flower ceremony

### **Saturday 7 December:**

08.00-19.00 Competition office open in Iso-Ylläs competition centre

10.00 Ensilumenrastit long distance

15.00 Deadline for entry for the sprint.

18.00 Team officials' meeting for the sprint.

### **Sunday 8 December:**

08.00-15.00 Competition office open in Iso-Ylläs competition centre

10.00 Women and Men sprint, individual start

11.30 Ensilumenrastit sprint

12.30 Flower ceremony

14.00 Prizegiving ceremony for Ensilumenrastit

### **Monday 9-12 December:**

Training camp – see special info in <http://ensilumenrastit.fi/en>

## Summary of entries

The summary of entries will be shown on the organizer's website <http://ensilumenrastit.fi/en>

## Team officials' meetings

Team officials' meetings will be organized according to the schedule above. Max. 2 participants by each nation.

Place is auditorium in the Kellokas Event Centre, Tunturintie 54, Äkäslompolo.

Competition material will be submitted during meetings.

## Training possibilities

There is no training camp before the World Cup Event. Skiing on permanent tracks outside the embargoed area is normally possible. Actual information on snow situation will be on the organizer's web page since the middle of November.

The Kellokas area is allowed to use for training since December 6<sup>th</sup>.

## Training after World Cup

From Monday, December 9<sup>th</sup> until Thursday 12<sup>th</sup> there is a training camp on World Cup tracks. See special info on <http://ensilumenrastit.fi/en>

## Media

Media Centre will be located inside the Event Centre during opening hours of the Event Office. Press conferences will be held after flowering ceremony or prize giving ceremony (Sprint) in Competition centers. Also top athletes and some head coaches will be interviewed during the day of the Model Event.

Media accreditation will be done by email, info (at) ensilumenrastit.fi. There is no fee for media accreditation.

Accommodation: see as for teams above.

## Copies of previous ski-orienteing and orienteing maps

Previous ski-orienteing maps and orienteing maps can be downloaded from the Organizer's website since September 1<sup>st</sup>, 2013.

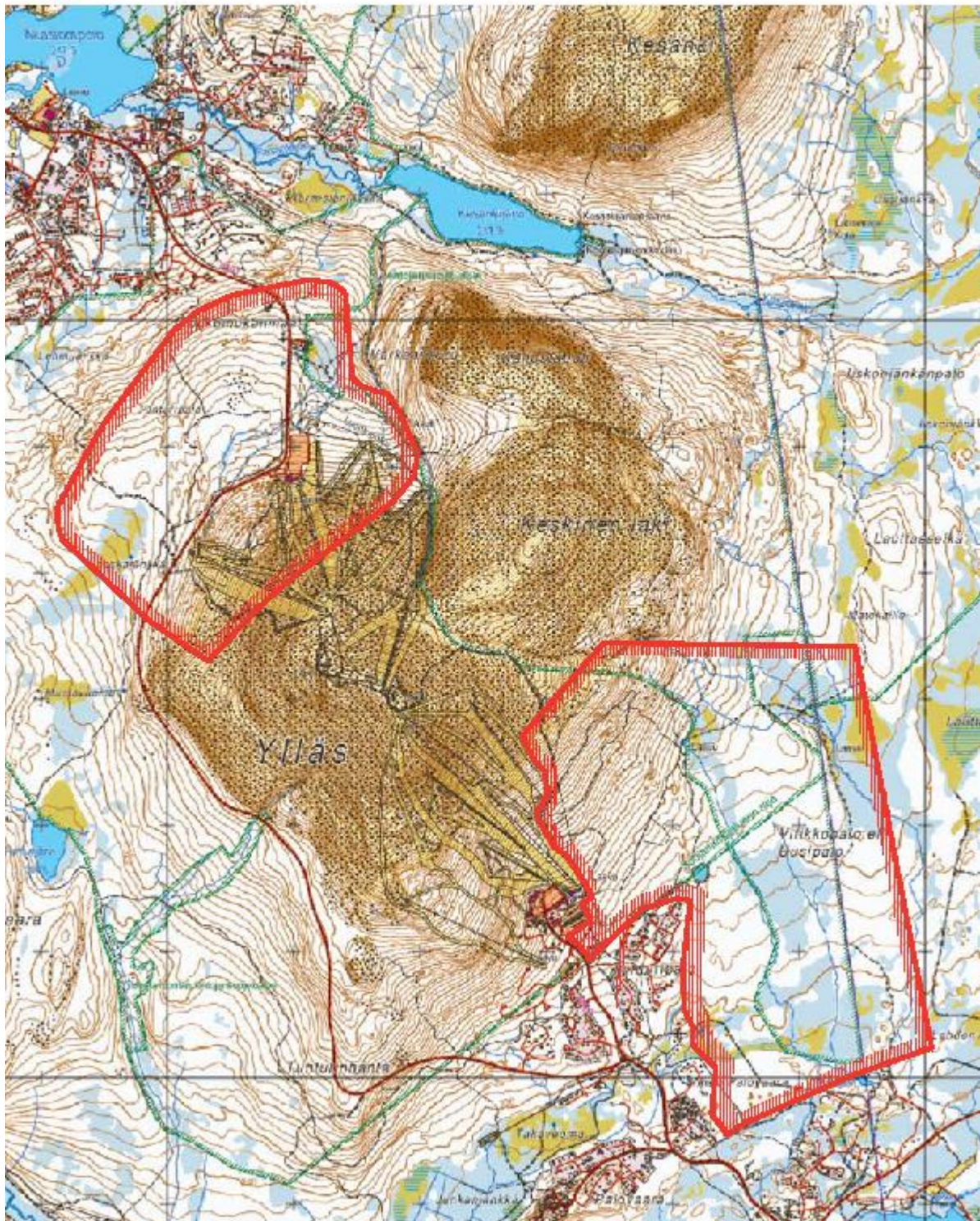
## Embargoed area

The competition areas are shown in the map below. Areas are embargoed until 9<sup>th</sup> December 2013 for competitors and team officials'. The area is closed for all orienteing activity. Outside the embargoed area there are some permanent ski tracks for skiing. Information on Ski tracks: <http://www.yllas.fi/en/maps-0>



# Embargoed areas in Ylläs World Cup Event

1:25000





# IOF World Cup in Ski Orienteering in Finland

3<sup>rd</sup> to 8<sup>th</sup> December 2013

Ylläs Ski resort in Kolari, Finland

