



2015-2016
OPENING ROUND
YLLÄS • FINLAND



SKI ORIENTEERING WORLD CUP SEASON OPENING ROUND YLLÄS, FINLAND

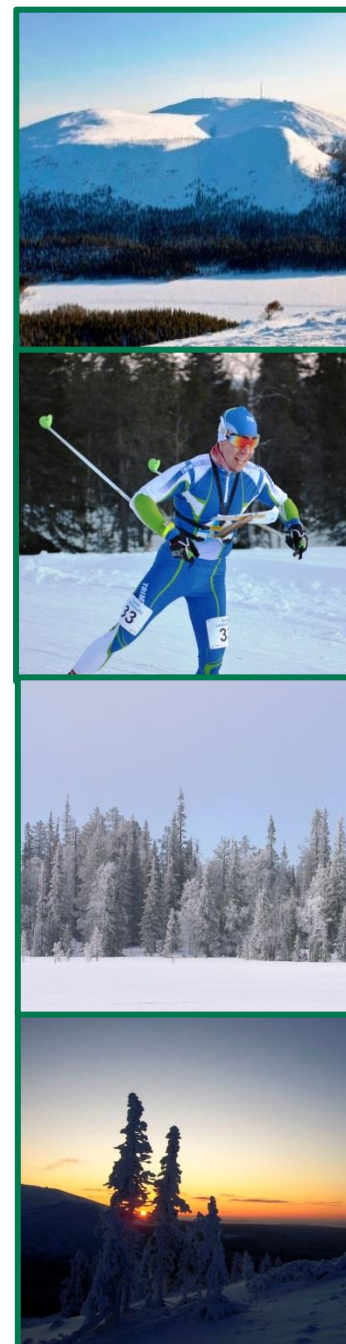
26 November – 2 December 2015

OPEN NATIONAL SKI ORIENTEERING ENSILUMEN RASTIT

5 – 6 December 2015

BULLETIN 1

Updated 9.2.2015



Images: Yläksen Matkailuyhdistys ry & Suomen Suunnistusliitto ry / Pirjo Valjainen



Kolarin kunta



Saaga
Lapland Hotels

ORGANIZERS

Orienteering clubs Länsi-Rajan Rasti, Suunta 2000 and Ylläksen Rasti

CHAIRMAN OF ORGANISING
COMMITTEE:

Veli-Markku Korteniemi

EVENT DIRECTOR:

Marko Vapa

marko@dropper.fi

+358 40 538 8132

IOF EVENT ADVISOR:

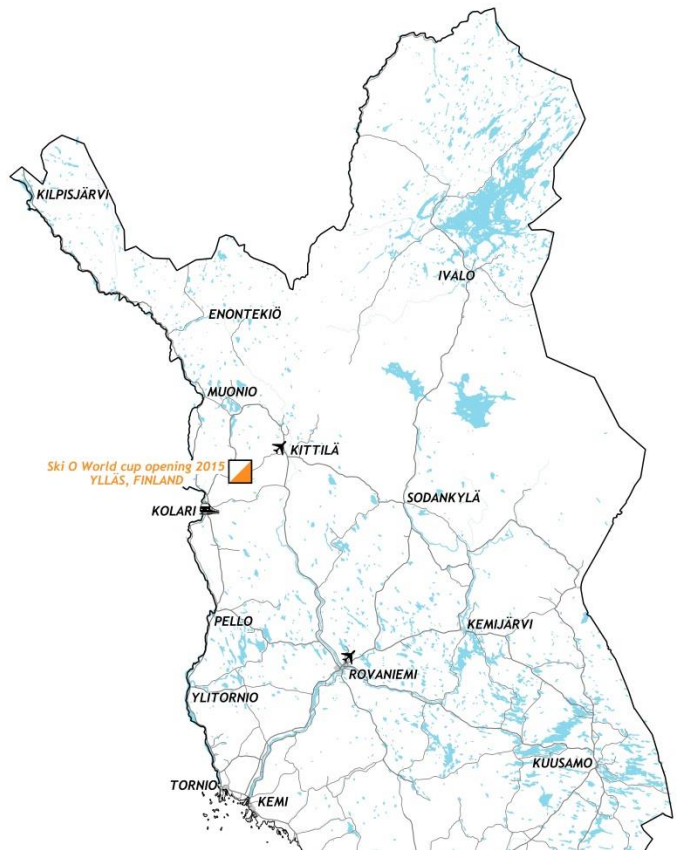
Per Frost

CONTACT PERSON:

Tommi Uusimäki

tommi@mapq.fi

+358 50 501 2349



VENUE

IOF Ski Orienteering World Cup Opening Round will be arranged in Ylläs Ski Resort area in Kolari, Finland.

Event Centre and Event Office will be at **Lapland Hotel Saaga**, Iso-Ylläksentie 42, 95980 YLLÄSJÄRVI.

Start, finish and training areas will be within 500 m of the Hotel Saaga. The altitude above sea level is app. 300 m.

TRAVELLING

The nearest international airport is Kittilä Airport, 40 km from the venue (40 min by bus). More info: <http://www.finavia.fi>

Nearest railway station is in Kolari, 37 km from the venue (60 min by bus).

More information: <http://www.vr.fi>.

PRELIMINARY PROGRAM

Thursday 26th November

Model event

Friday 27th November

Sprint distance

Opening ceremony

Saturday 28th November

Mixed sprint relay

Sunday 29th November

Middle distance

Banquet

Monday 30th November

Rest day

Tuesday 1st December

Long distance

Wednesday 2nd December

Reserve day

TRAINING AROUND WORLD CUP

Training camp 23 – 25 November

Training camp 3 – 4 December

ENSILUMEN RASTIT

OPEN NATIONAL COMPETITION

National 2-day competition Ensilumen

Rastit 5 – 6 December

RULES, CLASSES AND ENTRY

REGULATION

There is one class for men and women in individual distances. Sprint relay is for mixed teams with one man and one woman.

For further details on classes and regulations please refer to the Competition rules on the IOF web pages: <http://www.orienteering.org>

TERRAIN, CLIMATE AND DAYLIGHT

The terrain is situated on slope areas of Ylläs fell and consists of pine and spruce forest and partly open areas. Altitude is 200 - 450 m.

The climate is normal winter weather. Temperature is normally between -5°C to -20°C.

Daylight at Ylläs region is between 9 AM to 2 PM.

Local weather:

<http://en.ilmatieteenlaitos.fi/weather/kolari>

ACCOMMODATION

Official accommodation in Spa Hotel Saaga.

More info on Bulletin 2 and:

<http://www.laplandhotels.com/EN/hotels-and-restaurants/yllas/lapland-hotel-saaga.html>

EMBARGOED AREA

It is forbidden for all potential competitors, trainers, team leaders etc. to visit the area shown in the map, unless permission is specifically given by the organizers and the IOF Event Adviser. Violation of the embargo will result in disqualification

